

**COMPACT PENDANT ARM SERIES 4 SYSTEM 80, TYPE 12**

**INDUSTRY STANDARDS**

NEMA/EEMAC Type 12  
IEC 60529, IP55  
DIN 40050

**APPLICATION**

The Compact Series 4 System 80 Pendant Arms are heavy duty systems that are equally flexible in allowing operators to move controls into and out of position, but they can accommodate heavier weight loads. At 3.3 ft. (1 m), the Series 4 System 80 holds 337 lb. (153.2 kg).

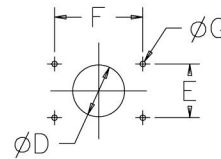
System 80 is recommended for use with Concept HMI and ProLine Sloped Front Enclosures. The hole patterns are different from other systems; cutouts will be different.

**SPECIFICATIONS**

- Heavy cast steel and cast aluminum couplings and heavy-wall steel tubing provide excellent structural strength
- Each system includes multiple coupling types and three standard tube lengths (.5 m, 1 m and 2 m) which combine to form numerous configurations
- Steel tubing has 5-mm (0.2-inch) wall thickness. Tubing is cold-formed, welded square and rectangular steel tubes.
- Tubing provides structural integrity and acts as a conduit for equipment wiring
- Removable access plates (provided with set-up joint, elbow and elbow couplings) simplify cable installation inside tubing
- Heavy-duty bearings in all movable joints for convenient, smooth operation and enhanced durability to withstand stresses of repeated use
- Deep tube fittings in all couplings
- Adjustable setscrews allow for accurate alignment of supporting tubes
- Gasket is oil-resistant neoprene

**FINISH**

Couplings are RAL 7035 light-gray polyester powder paint. Access plates and tubing are light-gray. Bellows are black.

**Standard Cutout for Mounting**


C2804-C

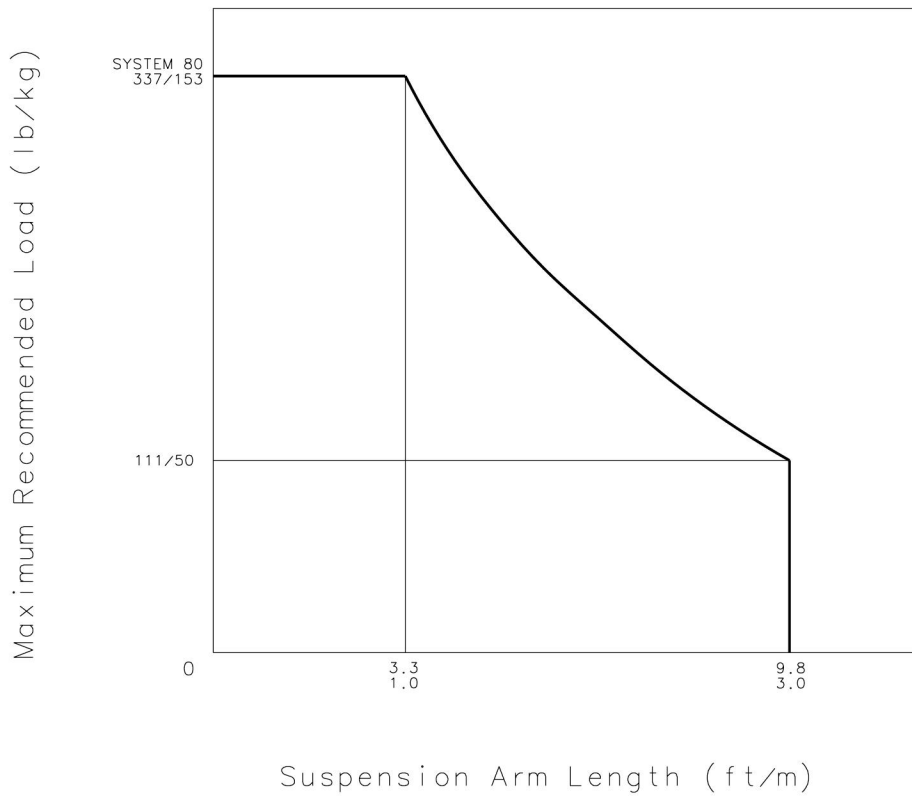
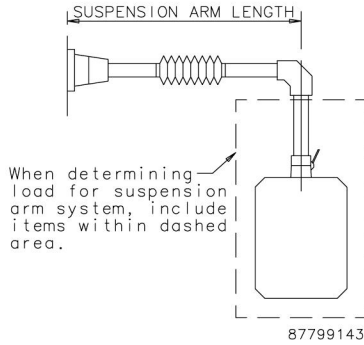
**Dimensions for Cutouts**

| System  | 80 (mm) | 80 (in.) |
|---|---------|----------|
| <b>Set-Up Joint</b>                             |         |          |
| Ø D MAX   | 105     | 4.13     |
| E   | 122     | 4.82     |
| F   | 122     | 4.82     |
| Ø G   | 13      | 0.51     |
| <b>Wall Joint or Cable Wall Joint</b>           |         |          |
| Ø D MAX   | 80      | 3.15     |
| E   | 80      | 3.15     |
| F   | 138     | 5.43     |
| Ø G   | 13      | 0.51     |
| <b>Wall Flange or Base Bracket</b>              |         |          |
| Ø D MAX   | 105     | 4.13     |
| E   | 122     | 4.80     |
| F   | 122     | 4.80     |
| Ø G   | 13      | 0.51     |
| <b>Flange Coupling or Flange Elbow Coupling</b> |         |          |
| Ø D MAX   | 91      | 3.58     |
| E   | 80      | 3.15     |
| F   | 80      | 3.15     |
| Ø G   | 7       | 0.26     |
| <b>Angle Adapter Plate</b>                      |         |          |
| Ø D MAX   | 91      | 3.58     |
| E   | 80      | 3.15     |
| F   | 120     | 4.72     |
| Ø G   | 7       | 0.26     |

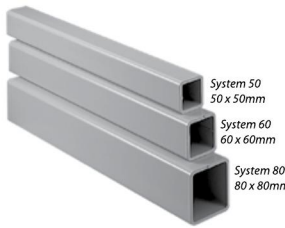
**SYSTEM LOAD CAPACITY**

The Series 4 Pendant Arm load graph is the result of load capacity tests. Please contact Hoffman for specific application information.

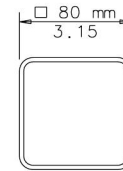
Load Diagram



89001155



Square and rectangular tubes are cold-formed, hollow, welded steel with 5-mm wall thickness. Finish is RAL 7035 light-gray polyester powder paint. Tubing provides structural integrity and acts as a conduit for equipment wiring. Available in 500-, 1000- and 2000-mm lengths. All pendant arm connections are sized to fit appropriate tube sizes.



87799136

**BULLETIN: CS4**

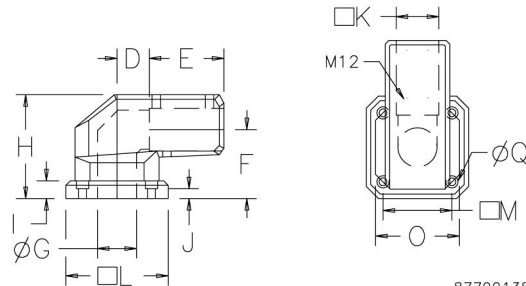
| Catalog Number | System | Size mm/in. | Length mm/in. | Weight (lb.) | External Dimensions mm/in. | Wall Thickness mm/in. | Inside Cross Section (sq. cm) | Inside Cross Section (sq. in.) |
|----------------|--------|-------------|---------------|--------------|----------------------------|-----------------------|-------------------------------|--------------------------------|
| CCS8T5         | 80     | 80 x 80     | 489           | 13.0         | 80 sq.                     | 5                     | 49                            | 7.60                           |
|                |        | 3.10 x 3.10 | 19.25         |              | 3.15                       | 0.20                  |                               |                                |
| CCS8T10        | 80     | 80 x 80     | 991           | 24.5         | 80 sq.                     | 5                     | 49                            | 7.60                           |
|                |        | 3.10 x 3.10 | 39.00         |              | 3.15                       | 0.20                  |                               |                                |
| CCS8T20        | 80     | 80 x 80     | 1988          | 49.0         | 80 sq.                     | 5                     | 49                            | 7.60                           |
|                |        | 3.10 x 3.10 | 78.25         |              | 3.15                       | 0.20                  |                               |                                |

**SET-UP JOINT**



Cast iron finished with RAL 7035 light-gray polyester powder paint. Mounts equipment to horizontal surface. Permits pendant arm to be rotated or turned 306 degrees. Pivot bearing is maintenance-free. Setscrews, removable access plate and gasket are included. Mounting hardware is not provided.

**BULLETIN: CS4**



Side View

Top View

87799138

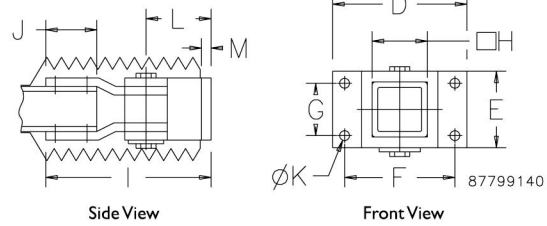
| Catalog Number | System | L mm/in. | H mm/in. | D mm/in. | E mm/in. | F mm/in. | G mm/in. | I mm/in. | J mm/in. | K mm/in. | M mm/in. | O mm/in. | Q mm/in. | Weight (lb.) |
|----------------|--------|----------|----------|----------|----------|----------|----------|----------|----------|----------|----------|----------|----------|--------------|
| CCS8SJLG       | 80     | 174      | 162      | 56       | 120      | 107      | 75       | 25       | 12       | 80       | 122      | 152      | 13       | 45.5         |
|                |        | 6.85     | 6.38     | 2.19     | 4.72     | 4.21     | 2.95     | 0.98     | 0.47     | 3.15     | 4.80     | 5.98     | 0.51     |              |

**WALL JOINT**



Welded steel plate construction finished with RAL 7035 light-gray polyester powder paint. Mounts equipment to vertical surface. Swivel range is approximately 180 degrees. Includes bellows with zipper, seals and setscrews. Adjustable tension at pivot point. Rotational limiter is optional. Mounting hardware not provided.

**BULLETIN: CS4**



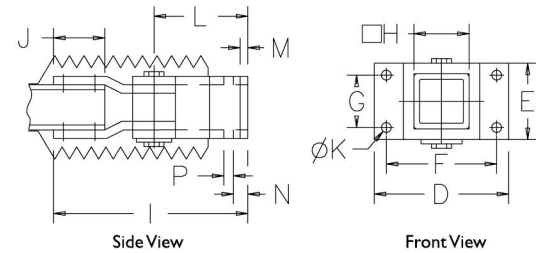
| Catalog Number | System | D<br>mm/in. | E<br>mm/in. | F<br>mm/in. | G<br>mm/in. | H<br>mm/in. | I<br>mm/in.  | J<br>mm/in. | K<br>mm/in. | L<br>mm/in. | M<br>mm/in. | Weight (lb.) |
|----------------|--------|-------------|-------------|-------------|-------------|-------------|--------------|-------------|-------------|-------------|-------------|--------------|
| CCS8WJRLG      | 80     | 161<br>6.34 | 104<br>4.09 | 138<br>5.43 | 80<br>3.15  | 80<br>3.15  | 300<br>11.81 | 100<br>3.94 | 13<br>0.51  | 135<br>5.31 | 10<br>0.39  | 21.6         |

**CABLE WALL JOINT**



Welded steel plate construction finished with RAL 7035 light-gray polyester powder paint. Mounts equipment to vertical surface. Provides cable access to inside of pendant system from above or below. Swivel range approximately 180 degrees. Includes bellows with zipper, seal and setscrews. Adjustable tension at pivot point. Rotation limiter is optional. Mounting hardware not provided.

**BULLETIN: CS4**



C2753-C

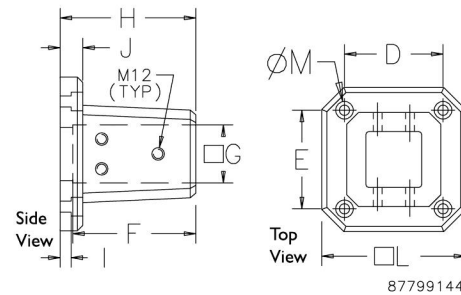
| Catalog Number | System | D<br>mm/in. | E<br>mm/in. | F<br>mm/in. | G<br>mm/in. | H<br>mm/in. | I<br>mm/in.  | J<br>mm/in. | K<br>mm/in. | L<br>mm/in. | M<br>mm/in. | N<br>mm/in. | P<br>mm/in. | Weight (lb.) |
|----------------|--------|-------------|-------------|-------------|-------------|-------------|--------------|-------------|-------------|-------------|-------------|-------------|-------------|--------------|
| CCS8WJCRLG     | 80     | 165<br>6.50 | 104<br>4.09 | 138<br>5.43 | 80<br>3.15  | 80<br>3.15  | 330<br>12.99 | 100<br>3.94 | 13<br>0.51  | 165<br>6.50 | 10<br>0.39  | 20<br>0.79  | 60<br>2.36  | 20.9         |

**WALL FLANGE**



Wall Flange expands mounting options to include wall-mount as well as horizontal tube applications. Cast iron construction finished with RAL 7035 light-gray polyester powder paint. Setscrews, gasket and seals are included. Mounting hardware not provided.

**BULLETIN: CS4**



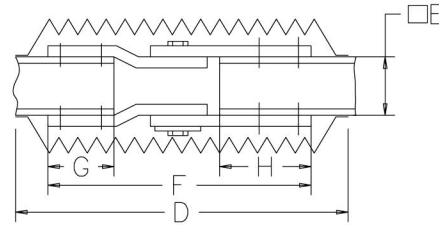
87799144

| Catalog Number | System | L<br>mm/in. | H<br>mm/in. | D<br>mm/in. | E<br>mm/in. | F<br>mm/in. | G<br>mm/in. | I<br>mm/in. | J<br>mm/in. | M<br>mm/in. | Weight (lb.) |
|----------------|--------|-------------|-------------|-------------|-------------|-------------|-------------|-------------|-------------|-------------|--------------|
| CCS8WFLG       | 80     | 174<br>6.85 | 160<br>6.30 | 122<br>4.80 | 122<br>4.80 | 143<br>5.63 | 80<br>3.15  | 12<br>0.47  | 25<br>0.98  | 13<br>0.51  | 20.1         |



Welded steel plate construction finished with RAL 7035 light-gray polyester powder paint. Mounts to pendant tube. Swivel range is approximately 180 degrees. Setscrews and bellows with zipper are included. Rotational limiter is optional.

**BULLETIN: CS4**



87799146

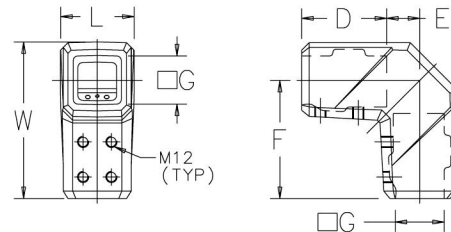
| Catalog Number | System | D<br>mm/in.  | E<br>mm/in. | F<br>mm/in.  | G<br>mm/in. | H<br>mm/in. | Weight (lb.) |
|----------------|--------|--------------|-------------|--------------|-------------|-------------|--------------|
| CCS8IJRLG      | 80     | 400<br>15.75 | 80<br>3.15  | 330<br>12.99 | 100<br>3.94 | 100<br>3.94 | 21.4         |

**ELBOW**



Cast aluminum with RAL 7035 light-gray polyester powder paint finish. Removable access plate. Setscrews and gaskets are included.

**BULLETIN: CS4**



87799402

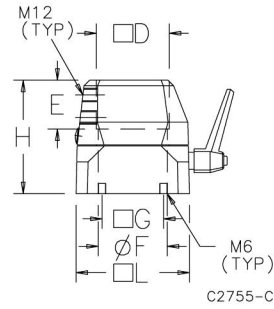
| Catalog Number | System | L<br>mm/in. | W<br>mm/in. | D<br>mm/in. | E<br>mm/in. | F<br>mm/in. | G<br>mm/in. | Weight (lb.) |
|----------------|--------|-------------|-------------|-------------|-------------|-------------|-------------|--------------|
| CCS8ELLG       | 80     | 108<br>4.25 | 225<br>8.86 | 120<br>4.72 | 50<br>1.97  | 170<br>6.69 | 80<br>3.15  | 18.7         |

### FLANGE COUPLING



Flange Coupling mounts to enclosure, enabling enclosure to be rotated 300 degrees. Enclosure can be locked in position. Safety stop and maintenance-free bearing. Finish is RAL 7035 light-gray polyester powder paint. Includes installation instructions, setscrews, gaskets and mounting hardware.

**BULLETIN: CS4**



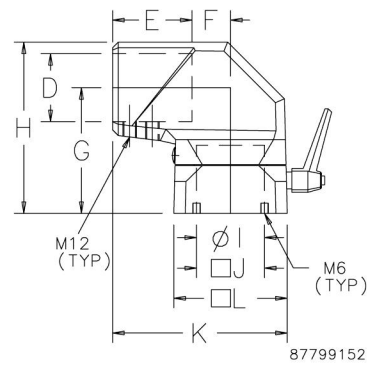
| Catalog Number | System | L<br>mm/in. | H<br>mm/in. | D<br>mm/in. | E<br>mm/in. | F<br>mm/in. | G<br>mm/in. | Weight (lb.) |
|----------------|--------|-------------|-------------|-------------|-------------|-------------|-------------|--------------|
| CCS8FCLG       | 80     | 120<br>4.72 | 110<br>4.33 | 80<br>3.15  | 53<br>2.09  | 91<br>3.58  | 80<br>3.15  | 7.2          |

### FLANGE ELBOW COUPLING



Coupling mounts to enclosure, enabling enclosure to be rotated 300 degrees. Enclosure can be locked in position. Removable access plates. Finish is RAL 7035 light-gray polyester powder paint. Setscrews, gasket and mounting hardware are included.

**BULLETIN: CS4**



| Catalog Number | System | L<br>mm/in. | H<br>mm/in. | D<br>mm/in. | E<br>mm/in. | F<br>mm/in. | G<br>mm/in. | I<br>mm/in. | J<br>mm/in. | K<br>mm/in. | Weight (lb.) |
|----------------|--------|-------------|-------------|-------------|-------------|-------------|-------------|-------------|-------------|-------------|--------------|
| CCS8FECLG      | 80     | 120<br>4.72 | 173<br>6.81 | 80<br>3.15  | 90<br>3.54  | 54<br>2.13  | 121<br>4.76 | 91<br>3.58  | 80<br>3.15  | 204<br>8.03 | 9.5          |

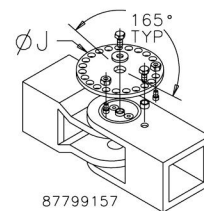
### ROTATION LIMITER



Accessory for use with Wall Joint, Cable Wall Joint and Intermediate Joint. Limits the rotation of these joints which normally rotate 180 degrees. Rotation Limiter provides stops in 15-degree increments. The limiter is a heavy-duty steel disk that attaches to the pivot point on each joint. Moveable stop pins provide adjustment.

**BULLETIN: CS4**

| Catalog Number | System | J (mm) | J (in.) | Weight (lb.) |
|----------------|--------|--------|---------|--------------|
| CCS814RL       | 80     | 119    | 4.70    | 1.3          |





Mounts between suspension arm and HMI enclosure to provide both swivel and tilt options for machine operator. Cast aluminum assembly finished with RAL 7035 light-gray polyester powder paint. Center opening for control cables. Tilt knob allows infinite tilt adjustment from horizontal to 30 degrees. Swivel allows 300-degree maximum rotation. Setscrews, seals and enclosure mounting screws are included.

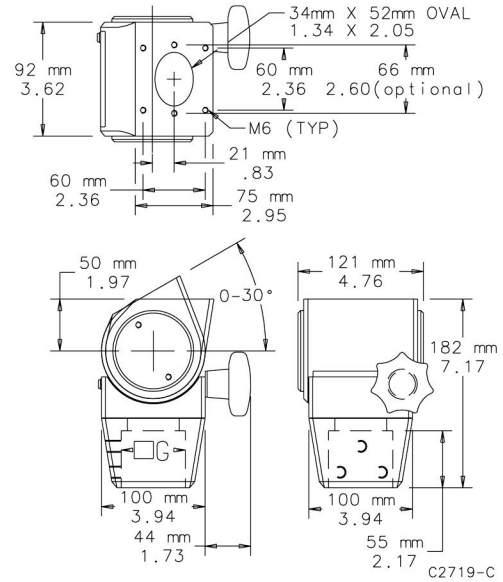
**Maximum load for overhead applications is 110 lb. (50 kg).**

BULLETIN: CS4



| Catalog Number | System | G (mm) | G (in.) | Weight (lb.) |
|----------------|--------|--------|---------|--------------|
| CCS8STBLG      |        |        |         |              |

Not recommended to be used in combination with base with cutout for sloped-front PBSK66 or PBSK66SS.

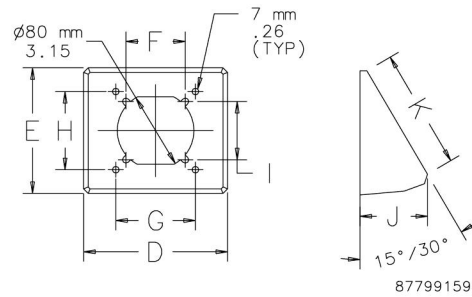


**ANGLE ADAPTER PLATE**



Cast aluminum finished with RAL 7035 light-gray polyester powder paint. Provides connection between enclosure and flange coupling. Includes gasket and installation hardware.

BULLETIN: CS4



87799159

| Catalog Number | System     | Angle | D mm/in.    | E mm/in.    | F mm/in.   | G mm/in.   | H mm/in.   | I mm/in.     | J mm/in.   | K mm/in.    | Weight (lb.) |
|----------------|------------|-------|-------------|-------------|------------|------------|------------|--------------|------------|-------------|--------------|
| CCS568AA15LG   | 50, 60, 80 | 15°   | 148<br>5.83 | 127<br>5.00 | 60<br>2.36 | 80<br>3.15 | 80<br>3.15 | 2.36<br>2.36 | 39<br>1.54 | 118<br>4.65 | 1.0          |
| CCS568AA30LG   | 50, 60, 80 | 30°   | 148<br>5.83 | 127<br>5.00 | 60<br>2.36 | 80<br>3.15 | 80<br>3.15 | 60<br>2.36   | 66<br>2.66 | 120<br>4.72 | 1.3          |

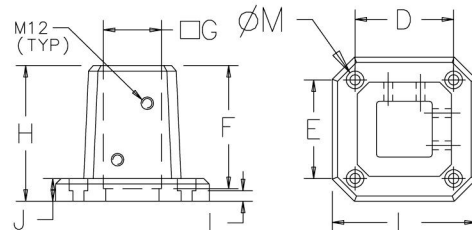
For CCS14AA15LG, system 80/140, 15-degree angle, 3.6 lb., see Angle Adapter Plate System 80/140 dimension drawing for dimension information.

**BASE BRACKET**



For vertical-tube mounting or to mount tube to floor. Bracket is cast iron finished with RAL 7035 light-gray polyester powder paint. Setscrews, gasket and seals are included. Mounting hardware not provided.

BULLETIN: CS4



87799161

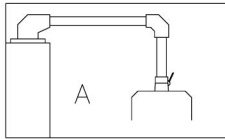
| Catalog Number | System | L mm/in.    | H mm/in.    | D mm/in.    | E mm/in.    | F mm/in.    | G mm/in.   | I mm/in.   | J mm/in.   | M mm/in.   | Weight (lb.) |
|----------------|--------|-------------|-------------|-------------|-------------|-------------|------------|------------|------------|------------|--------------|
| CCS8BBLG       | 80     | 174<br>6.85 | 160<br>6.30 | 122<br>4.80 | 122<br>4.80 | 143<br>5.63 | 80<br>3.15 | 12<br>0.47 | 25<br>0.98 | 13<br>0.51 | 20.4         |

## SYSTEM CONFIGURATIONS

**Note to Specifier:**

Select suspension system sizing using the Compact Series 4 System 80 load capacity chart.

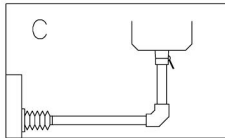
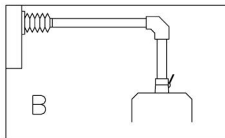
1. Tube catalog numbers are not included in configuration tables.
2. There are multiple configurations possible with many of the options shown. Components can be inverted. For illustration purposes, configurations may show how components can be inverted or used with varying enclosure couplings.



87799186

**A**

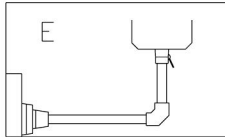
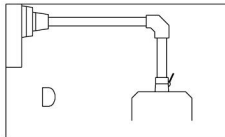
| Description                    | Qty. | Catalog Number        |
|--------------------------------|------|-----------------------|
| Set-up joint                   | 1    | CCS8SJLG              |
| Elbow                          | 1    | CCS8ELLG              |
| Flange coupling or Swivel tilt | 1    | CCS8FCLG<br>CCS8STBLG |



87799187

**B AND C**

| Description                    | Qty. | Catalog Number          |
|--------------------------------|------|-------------------------|
| Wall joint or Cable wall joint | 1    | CCS8WJRLG<br>CCS8WJCRLG |
| Elbow                          | 1    | CCS8ELLG                |
| Flange coupling or Swivel tilt | 1    | CCS8FCLG<br>CCS8STBLG   |

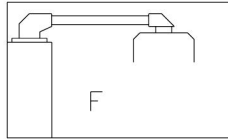


87799189

**D AND E**

| Description                    | Qty. | Catalog Number        |
|--------------------------------|------|-----------------------|
| Wall flange                    | 1    | CCS8WFLG              |
| Elbow                          | 1    | CCS8ELLG              |
| Flange coupling or Swivel tilt | 1    | CCS8FCLG<br>CCS8STBLG |

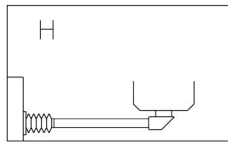
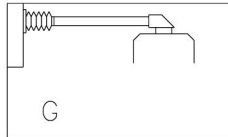




87799190

**F**

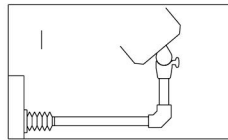
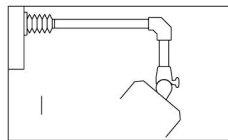
| Description           | Qty. | Catalog Number |
|-----------------------|------|----------------|
| Set-up joint          | 1    | CCS8SJLG       |
| Flange elbow coupling | 1    | CCS8FECLG      |



87799191

**G AND H**

| Description                    | Qty. | Catalog Number |
|--------------------------------|------|----------------|
| Wall joint or Cable wall joint | 1    | CCS8WJRLG      |
| Flange elbow coupling          | 1    | CCS8FECLG      |

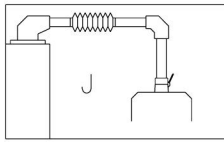


87799193

**I**

| Description                    | Qty. | Catalog Number |
|--------------------------------|------|----------------|
| Wall joint or Cable wall joint | 1    | CCS8WJRLG      |
| Elbow                          | 1    | CCS8ELLG       |
| Swivel tilt <sup>a</sup>       | 1    | CCS8STBLG      |

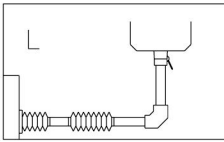
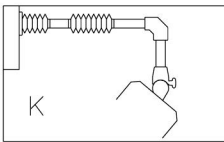
<sup>a</sup>Maximum load for overhead applications is 110 lb. (50 kg) including enclosure.



87799194

**J**

| Description                    | Qty. | Catalog Number        |
|--------------------------------|------|-----------------------|
| Set-up joint                   | 1    | CCS8SJLG              |
| Intermediate joint             | 1    | CCS8IJRLG             |
| Elbow                          | 1    | CCS8ELLG              |
| Flange coupling or Swivel tilt | 1    | CCS8FCLG<br>CCS8STBLG |

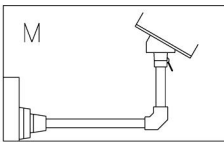


87799195

**K AND L**

| Description                                 | Qty. | Catalog Number          |
|---|------|-------------------------|
| Wall joint or Cable wall joint              | 1    | CCS8WJRLG<br>CCS8WJCRLG |
| Intermediate joint                          | 1    | CCS8IJRLG               |
| Elbow                                       | 1    | CCS8ELLG                |
| Flange coupling or Swivel tilt <sup>a</sup> | 1    | CCS8FCLG<br>CCS8STBLG   |

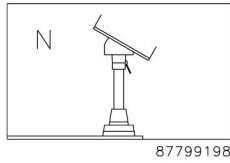
<sup>a</sup>Maximum load for overhead applications is 110 lb. (50 kg) including enclosure.



87799197

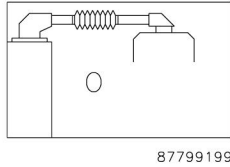
**M**

| Description     | Qty. | Catalog Number |
|-----------------|------|----------------|
| Wall flange     | 1    | CCS8WFLG       |
| Elbow           | 1    | CCS8ELLG       |
| Flange coupling | 1    | CCS8FCLG       |



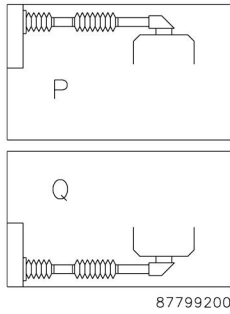
**N**

| Description                               | Qty. | Catalog Number               |
|---|------|------------------------------|
| Base bracket                              | 1    | CCS8BBLG                     |
| Flange coupling                           | 1    | CCS8FCLG                     |
| Angle adapter 15° or<br>Angle adapter 30° | 1    | CCS568AA15LG<br>CCS568AA30LG |



**O**

| Description           | Qty. | Catalog Number |
|-----------------------|------|----------------|
| Set-up joint          | 1    | CCS8SJLG       |
| Intermediate joint    | 1    | CCS8IJRLG      |
| Flange elbow coupling | 1    | CCS8FECLG      |



**P AND Q**

| Description                       | Qty. | Catalog Number          |
|-----------------------------------|------|-------------------------|
| Wall joint or<br>Cable wall joint | 1    | CCS8WJRLG<br>CCS8WJCRLG |
| Intermediate joint                | 1    | CCS8IJRLG               |
| Flange elbow coupling             | 1    | CCS8FCLG                |

## Notes



